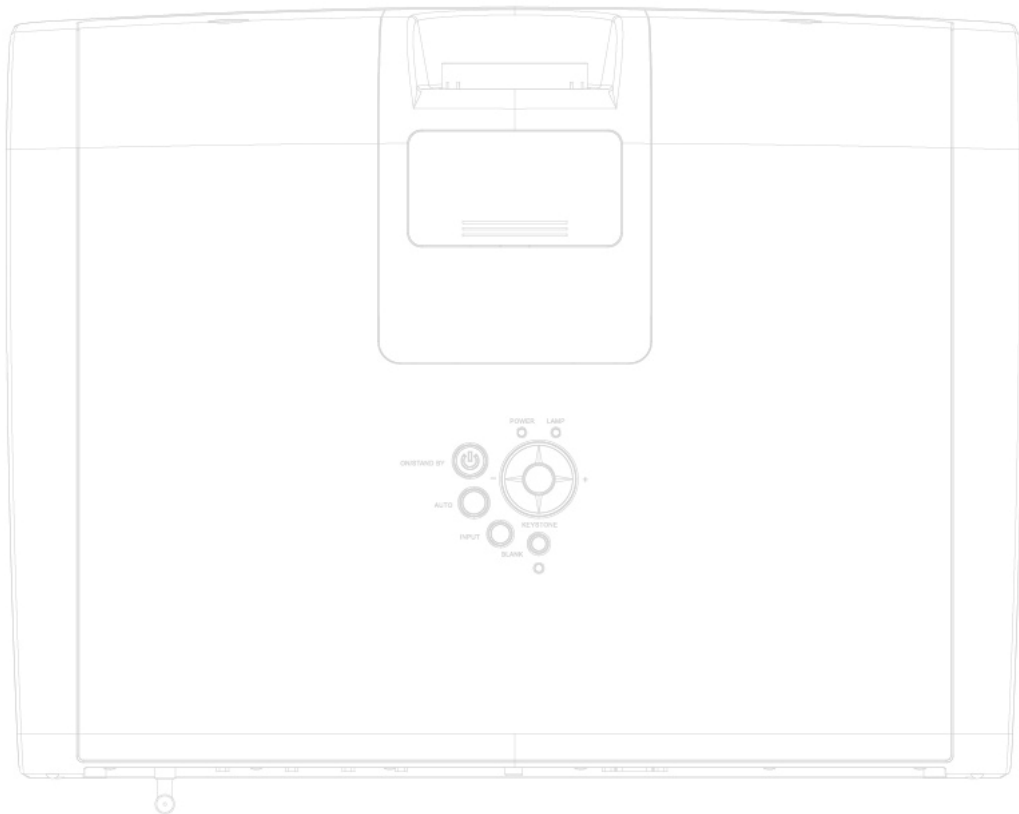


# Chapter 5

## RS 232 Command

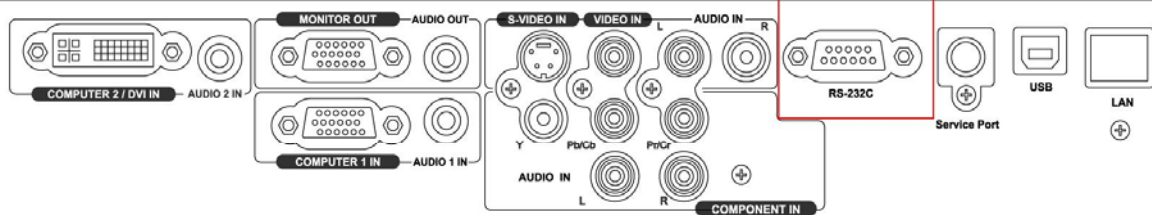


## RS 232 Command

### - RS232 Command -

#### - Connection -

- Use RS-232C-to-PS2 cable ( part number: **13660016** )
- Connect with RS232C port of projector.



### - Why RS232 command doesn't work ?

Please check

- The baud rate setting is **9600**
- Is the port you select correct ? For example “ com 1” or “ com 2 “
- Make sure you command you key in , for example command “ power on “ :

**Correct :**        **C00CR** ( ASCII ) or **43 30 30 0D** ( HEX )

**incorrect :**     **C00**                    ( ASCII )            or   **43 30 30**  
( HEX )

# RS 232 Command

## - EDI Projector RS232 Communication Format -

### 1. Communication Protocol

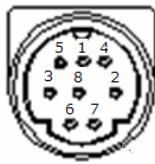
Standard Baud rate: 9600 bps or 19200bps  
 Data length: 8 bits  
 Parity: None  
 Stop bit: 1 bit  
 Flow Control: None

### 2. RS232 Cable Define for EX31xx / EX-27xx Serial Projectors

<b>(PC side)</b>	<b>(Projector side with D sub - pin)</b>
RX 2	2 TX
TX 3	3 RX
GND 5	5 GND

### 3. RS232 Cable Define for EX-17xx / Uxx Serial Projectors

<b>(PC side)</b>	<b>(Projector side with Mini-Din 8 pin Plug)</b>
RX 2	5 TX
TX 3	3 RX
GND 5	4, 8 GND



### 4. Command Format (TYPE1:EX-17xx and Uxx serial, TYPE2:EX-31xx, EX27xx and Pxx)

#### TYPE1 CODE :

Example: Power ON command is sent to the projector with a CR, the projector returns a "15" or "68D" code  
 Command (ASCII)

	PC			C	0	0	CR										
	Projector						Processing Command		1	5							

#### TYPE2 CODE :

Command (ASCII)

	PC		P	W	R	O	N										
	Projector						Processing Command		6	8		D					

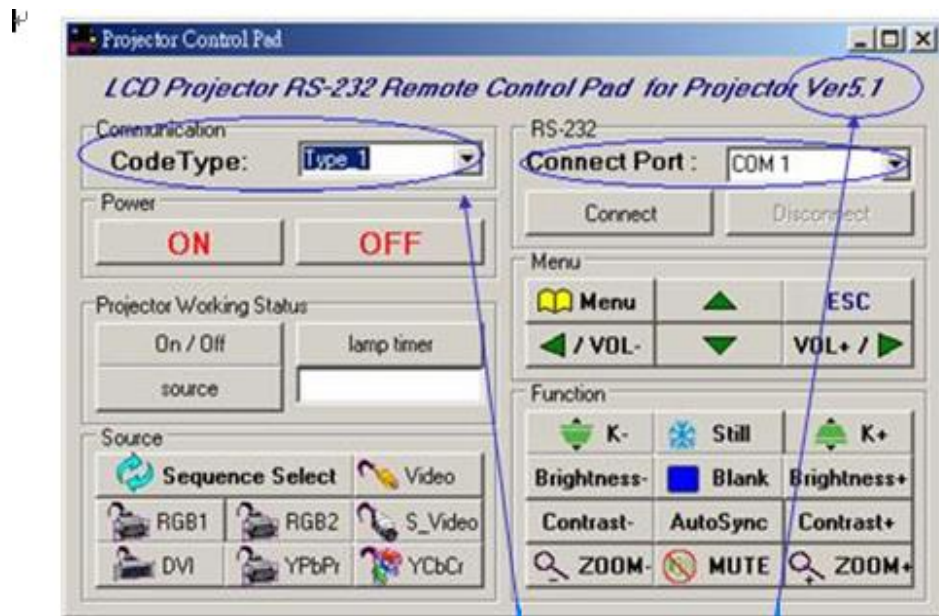
## RS 232 Command

### - EDI Projector RS232 Communication Format - - Command List

TYPE1 Command (HEX+CR) EX-27xx / EX-17xx / Uxx / pxx	TYPE2 Command EX-31xx / EX-27xx	Function	Remarks
C00(43 30 30 0D)	PWRON	POWER ON	
C01(43 30 31 0D)	PWROFF	POWER OFF	
C02(43 30 32 0D)	INRGB1	COMPUTER1	
C04(43 30 34 0D)	INRGB2	COMPUTER2	
C03(43 30 33 0D)	INYPBPR	YPBPR	
C05(43 30 35 0D)	INDVI	DVI	
C06(43 30 36 0D)	INVIDEO	VIDEO	
C07(43 30 37 0D)	INSVIDEO	S-VIDEO	
C08(43 30 38 0D)	INYCBCR	COMPONENT	
C09(43 30 39 0D)	FUVOL+	VOLUME +	
C0A(43 30 40 0D)	FUVOL-	VOLUME -	
C1D(43 31 44 0D)	FUMENU	MENU	
C30(43 33 30 0D)	FUUP	UP	
C31(43 33 31 0D)	FUDOWN	DOWN	
C32(43 33 32 0D)	FULEFT	LEFT	
C33(43 33 33 0D)	FURIGHT	RIGHT	
C34(43 33 34 0D)		MUTE	
C43(43 34 33 0D)		FREEZE	
C80(43 38 30 0D)		ZOOM+	
C81(43 38 31 0D)		ZOOM-	
C90(43 39 33 0D)		ESC	
C91(43 39 31 0D)		SOURCE	
C92(43 39 32 0D)	FUAUTO	AUTO	
C93(43 39 33 0D)		CONTRAST+	
C94(43 39 34 0D)		CONTRAST-	
C95(43 39 35 0D)		BRIGHTNESS+	
C96(43 39 36 0D)		BRIGHTNESS-	
C97(43 39 37 0D)	FUBLANK	BLANK	
C98(43 39 38 0D)		KEYSTONE+	
C99(43 39 39 0D)		KEYSTONE-	
CR0(43 52 30 0D)		POWER-STAT US	<u>STATUS feedback</u> "000" - projector is on "800" - projector is standby "200" - projector is cooling down "500" - projector is warm up
CR1(43 52 31 0D)		SOURCE-STAT US	<u>STATUS feedback</u> "001" - COMPUTER1 "002" - DVI "003" - COMPUTER2 "010" - VIDEO "020" - S-VIDEO "040" - COMPONENT "004" - YPbPr
CR2(43 53 32 0D)		TIMER-STATU S	<u>STATUS feedback</u> "xxxHrs xxxMins" - Lamp time hours (for EX-17 and Uxx only) "HHHH" - Lamp time hours (for EX-27xx only)

## RS 232 Command

- RS232 Remote\_Control Pad - (Software part number: 51760001)



- Why RS232 Remote\_control Pad doesn't work ?

Please check

I - Make sure the version is 5.1 or greater than 5.1.

II - Make sure the code type is Type 1.

III - The baud rate setting is 9600 or 19200.

IV - Is the connect port you select correct ? For example "com 1" or "com 2".