



**HITACHI**  
Inspire the Next

## Networking Hitachi 3LCD Projectors

Hitachi CPX2 / CP-X205 / CP-X256 / CP-X265 / CP-X268a / CP-X305 / CP-X505 / CP-X605 / CP-X608

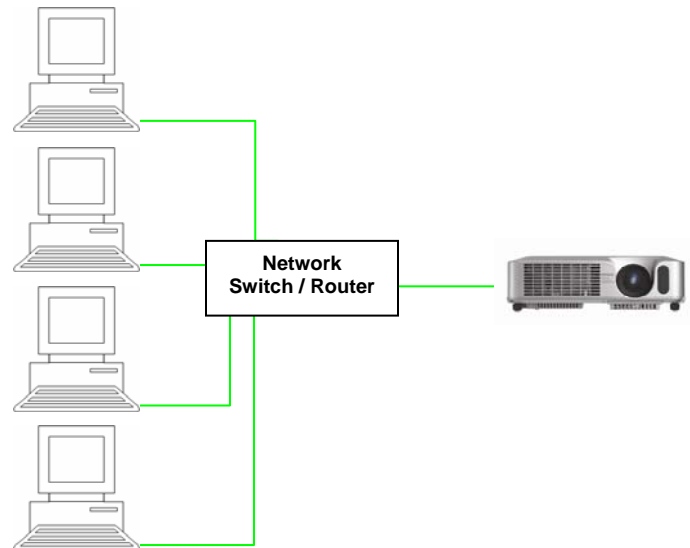
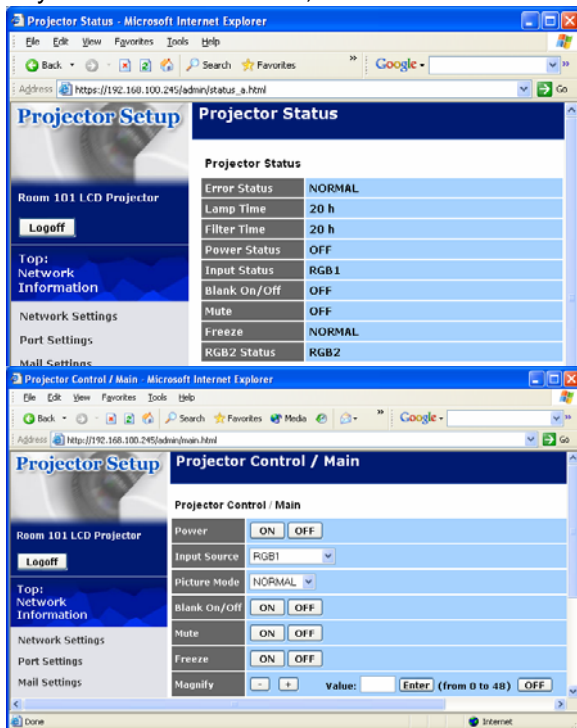


Hitachi Network enabled 3LCD Projectors have been designed with powerful embedded network features that are easy to use and that can be accessed from any computer on your network.

### **Web Browser Access, Control and Management**

Using a standard web browser\* provides access the projector from any location on your network.

This powerful feature allows you to control, diagnose and schedule alerts / events for the projector from anywhere on the network, without the need for of additional software.



(\*Internet Explorer 5.5 / Netscape 6.2 or greater)



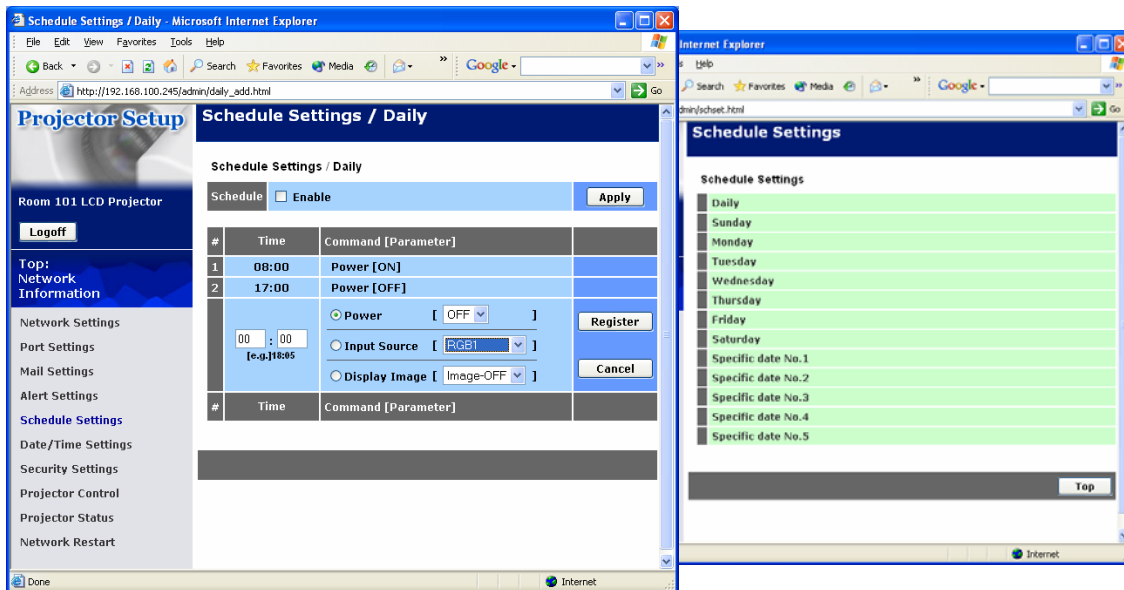
## Self Managing

Hitachi Network enabled 3LCD Projectors have internal Scheduling and e-Mail capabilities, which allow the projector to manage itself.

## Scheduling

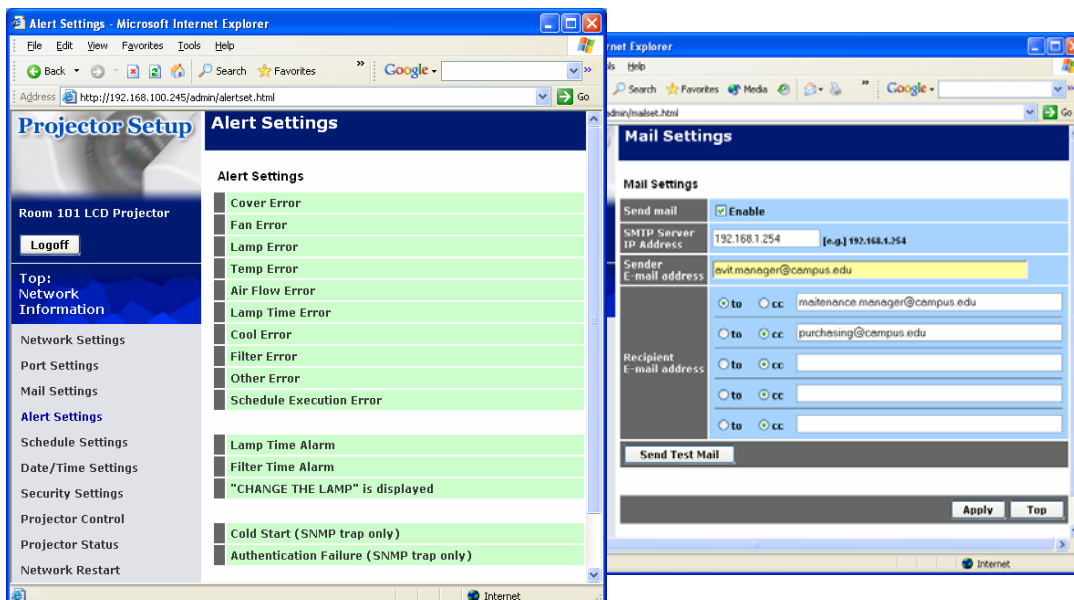
Internal scheduling capabilities allow the projector to perform routine unmanned operations like Power ON, Power OFF, Input Source Selection and to display Images stored inside of the projector's memory (e-Shot feature).

Events can be scheduled on a Daily or Weekly basis, as well as for a Specific date and time.



## e-Mail Maintenance and Alerts

Routine and critical maintenance alerts can be sent by e-mail directly from the projector, giving you the ability to react immediately when needed.





## Security

Hitachi Network enabled 3LCD Projectors provide a number of security features that allow you to control who has access to the projector.

### Multi-Level Password Protection

- Administrator and User access levels
  - o Administrator level Logon provides full access to all control and settings screens
  - o User level Logon provides a user with basic projector control

Other security features include SSL & authentication for usage with SNMP & Hitachi Projector Management / Projector Control Applications.

**Projector Setup**

Room 101 LCD Projector

ID: Administrator

Password: .....

Logon Clear

**Security Settings**

Security Settings

- Administrator authority
- User authority
- Network Control
- SNMP

Top

Date/Time Settings

**Security Settings**

Projector Control

Projector Status

Network Restart

SSL (Secure Socket Layer) Compliant  
Secure and Encrypted



**HITACHI**  
Inspire the Next

### Pre & Post Installation Friendly

Hitachi Network enabled 3LCD Projectors provide features that makes the process of integrating with your network easier.

- 100BASE-TX Auto Sensing LAN Port
- Auto Discovery Capable
- DHCP or Static IP Addressing
- SNMP (Simple Network Management Protocol)
- SNTP (Simple Network Time Protocol)

### Hitachi Projector Tools

Hitachi Network enabled 3LCD Projectors are compliant with Hitachi's suite of software applications that are designed to help you maximize and protect your investment.

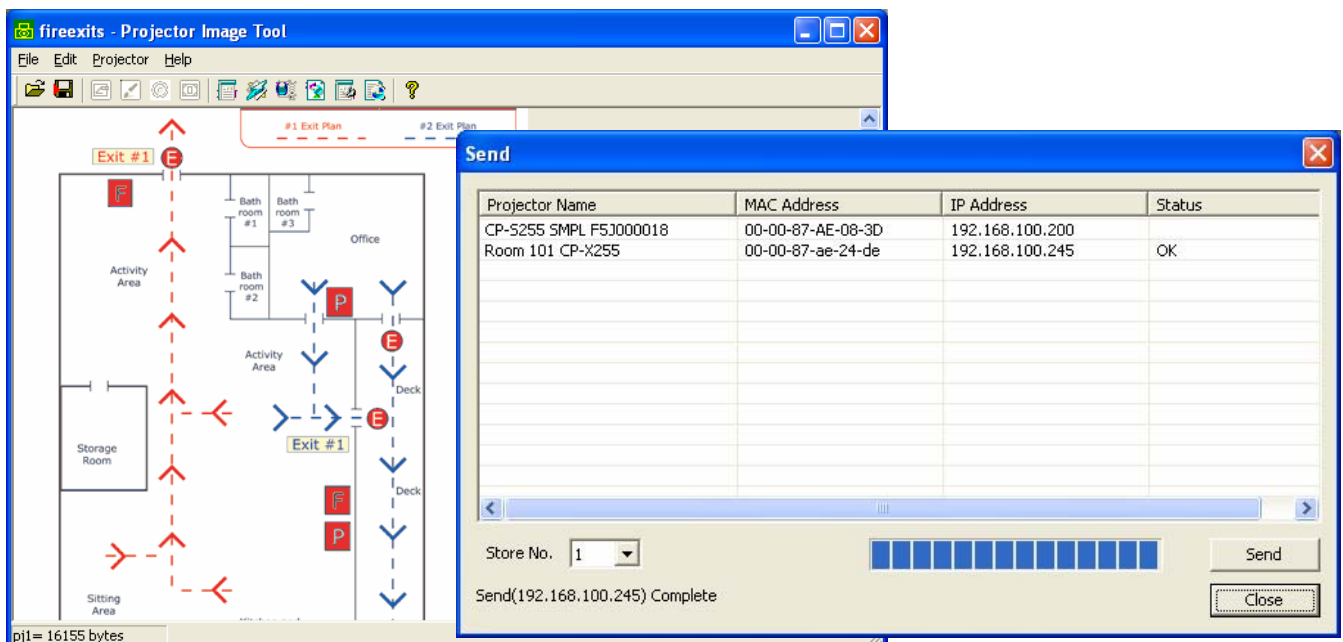
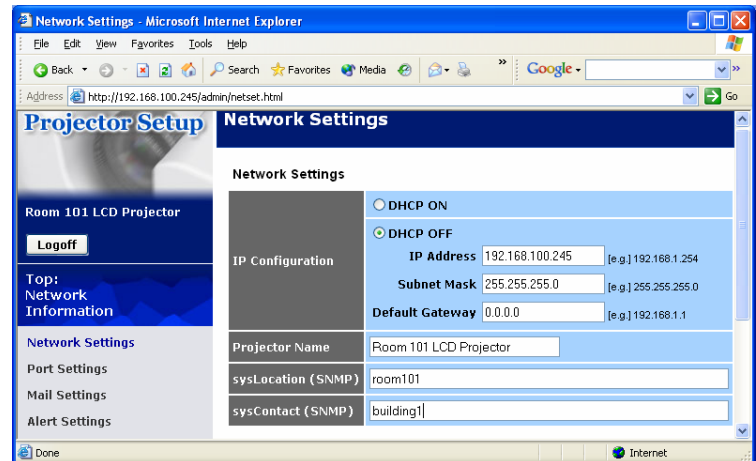
### PJImg (Protector Image Tool)

Hitachi's latest Projector Software Application, known as 'PJImg' (Projector Image Tool) allows you to transfer images across a LAN to Hitachi Network enabled 3LCD Projectors \*.

The image is then stored in the projector and is displayed using the 'e-Shot'\* feature of Hitachi Network enabled 3LCD Projectors. Hitachi Network enabled 3LCD Projectors can store four separate 'e-Shot' images that can be recalled / displayed using the projector's remote control, Hitachi's PJCtrl application or Hitachi's PJMan application.

'e-Shot' is great for:

- sending your presentation images ahead to the projector (so you can leave your computer behind)
- sending morning announcements to rooms on campus
- sending important notifications or emergency instructions





## Hitachi Projector Management Application ('PJMan') v5.0

Hitachi's Projector Management Application ('PJMan') provides AV/IT Managers & Media Specialists the ability to manage multiple Hitachi 3LCD Projectors from a single PC console.

Hitachi's PJMan can control, monitor, diagnose and schedule events for Hitachi 3LCD Projectors. PJMan can also generate e-mail notifications for routine maintenance and critical situations.

### Management / Monitoring

Monitor Real-Time Status

Group of Projectors

Individual Projector

Name	Connection	MAC Address	Power	Input	Status	Lamp Time	Filter Time
Lab	192.168.100.245:23	00-00-87-ae-c4-22	Cool Down	RGB1	Normal	18 h	18 h
Conference Room	192.168.100.202:23	00-00-87-56-e4-f4	ON	Video	Normal	107 h	1 h
Auditorium	192.168.100.2:23	00-00-87-16-01-8f	ON	BNC	Normal	101 h	0 h
Classroom 401	192.168.100.45:23	-	-	-	Disconnect	-	-

AV/IT Manager or Media Specialist can

- Analyze actual projector usage and forecast maintenance / resource needs
- Provide immediate Helpdesk support remotely

## Hitachi Projector Control ('PJCtrl') v3.0



Hitachi's Projector Control Application ('PJCtrl') allows a user to control the functions of their Hitachi 3LCD Projector via their desktop or laptop PC.

Since all of the functions for controlling the projector are on the PC, PJ Ctrl can help to reduce costs associated with lost remote controls, battery replacement, etc...

For more information regarding Hitachi Network enabled 3LCD Projectors (and the complete line up of Hitachi 3LCD projector models), please visit [www.hitachi.us/digitalmedia](http://www.hitachi.us/digitalmedia)

For more information regarding Hitachi's 3LCD Projector Tools, please refer to the 'Software Downloads' section of the [www.hitachi.us/digitalmedia](http://www.hitachi.us/digitalmedia) web site

For more information on 3LCD technology, please visit [www.3lcd.com](http://www.3lcd.com)